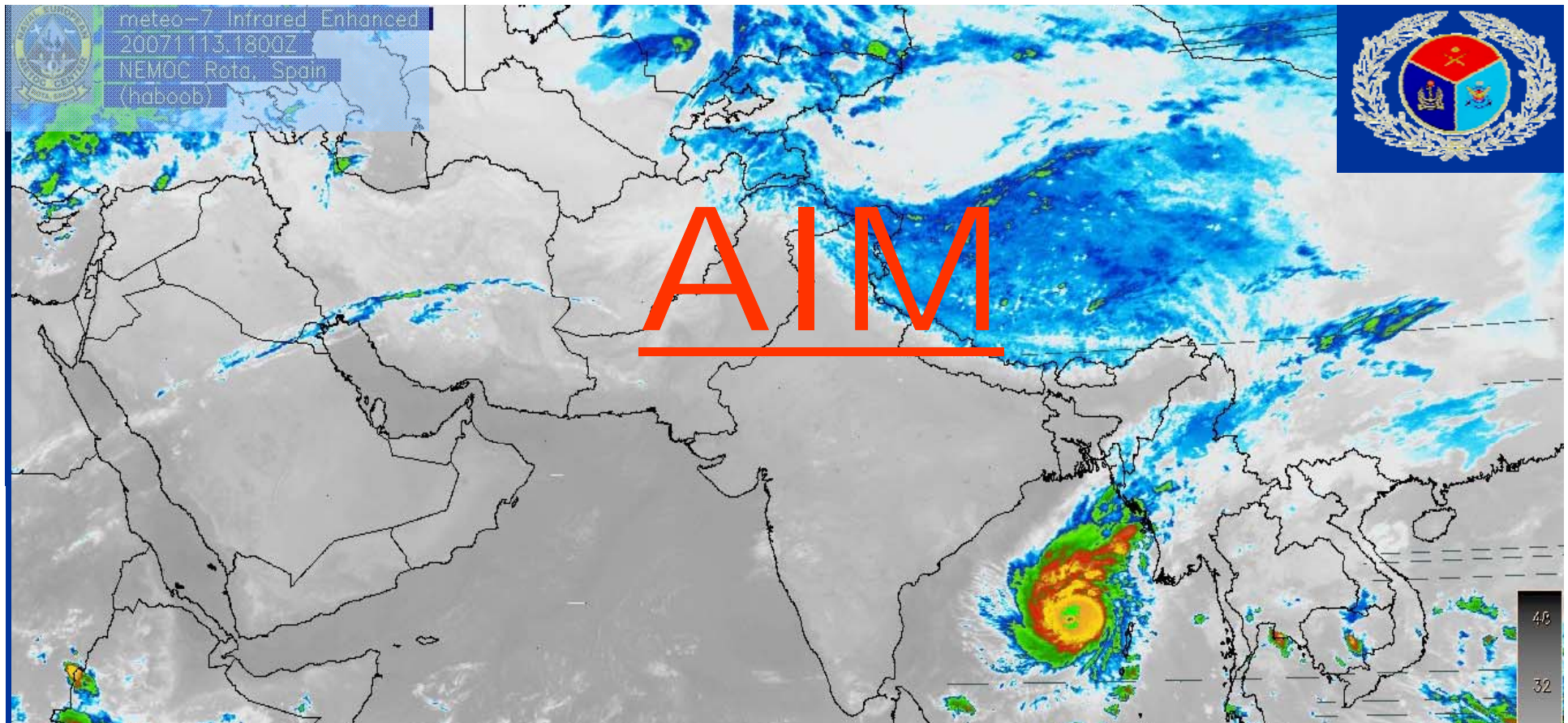
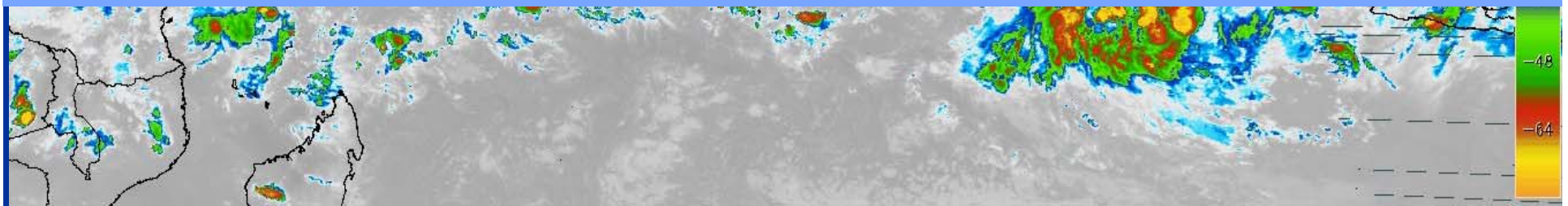




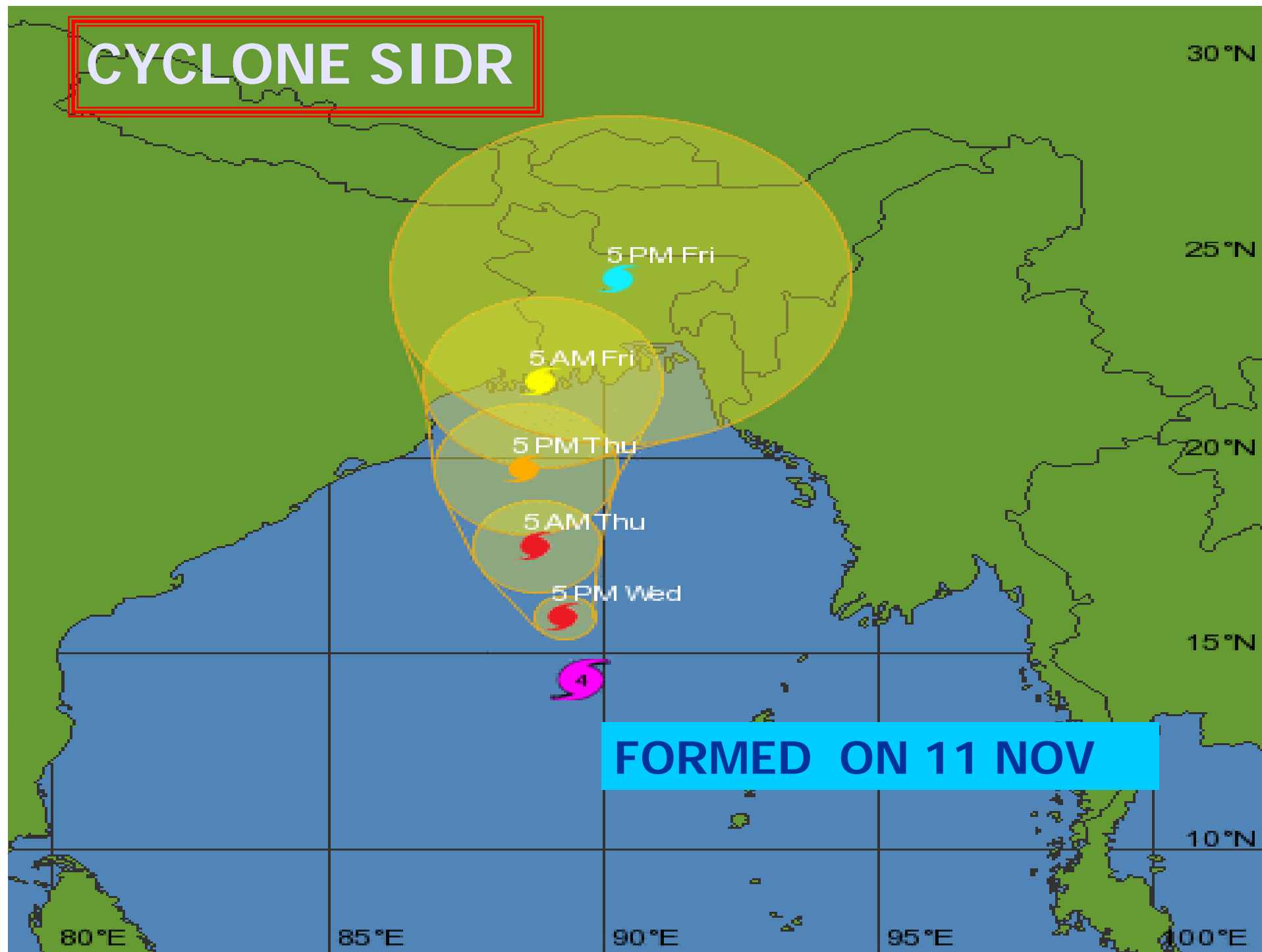
ARMED FORCES DIVISION



To brief on cyclone 'SADR' and its aftermath



CYCLONE SIDR





meteo-7 mvissr_ir Infrared Overlay
20071115.1200Z
NEMOC Rota, Spain
(haboob)



The image is a satellite infrared overlay map showing the Indian Ocean region. A yellow circle highlights a specific area in the Bay of Bengal, and a red arrow points from a text box at the bottom to this area. The map shows cloud patterns and landmasses including India, the Middle East, and parts of Africa and Southeast Asia.

STRUCK BD COAST ON 151900 NOV 07



• **MAXIMUM WIND SPEED ABOUT 250 KM/HR**

• **TIDAL SURGE 4-5 FEET AND AT PLACES 8 FEET**

100 km



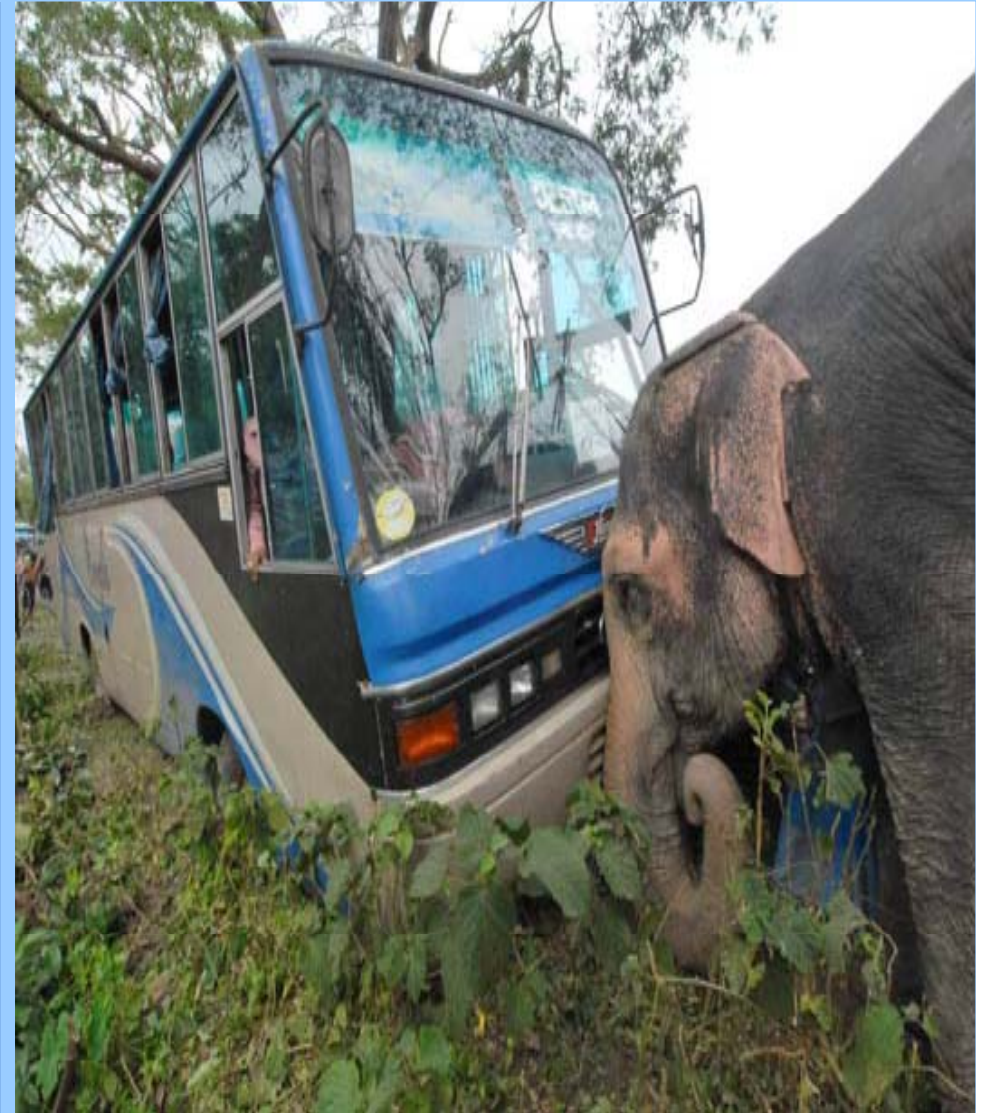
- **Timely The Warning Signal was Propagated**

- **Sizable Population could be Shifted**





DESTRUCTIONS





DESTRUCTIONS





DESTRUCTIONS





DESTRUCTIONS







BRIDGES AND PONTOONS





FOREST





AFFECTED DISTRICTS/UPZILLAS

200 SUB DISTRICTS OF 30 DISTRICTS

- Worst Affected Districts - 07**
- Moderately Affected Districts - 08**
- Less Affected Districts - 15**



AFFECTED DISTRICTS/UPZILLAS

- **DEATH TOLL - 3363**



CYCLONE 1991 AND 2007

Ser	Event	1991	2007
1.	Death Toll	1,38,882	3363
2.	Missing	20,000	871
3.	Crops Damaged Area	3,50,000 Acres	2472942 Acres
4.	Areas Affected	15,000 Sq km	30 Districts



DAMAGE STATISTICS

■ WOUNDED	-	4300
■ MISSING	-	871
■ SHELTER LESS	-	1572495
■ LOSS OF LIVE STOCK	-	461750
■ SCHOOLS DESTROYED	-	7835
■ LOST BOATS AND TRAWLER	-	137

Damage Assessment



- Number of affected Districts - 30
- Number of badly affected Districts - 07
- Number of affected Upa-Zillas - 200
- Number of affected Unions - 1,880
- Number of affected families - 20,64026
- Number of affected people - 89,23259

Damage Assessment



Recognized death cases	- 3,363 pers
Persons missing	- 871
Dwellings damaged (Completely)	- 3,63,346
(Partially)	- 8,15,628 nos
Crop damage (Completely) in acres	- 2472944
Death of live stocks	- 4,61,750
Water craft capsized/missing	- 137

Damage Assessment

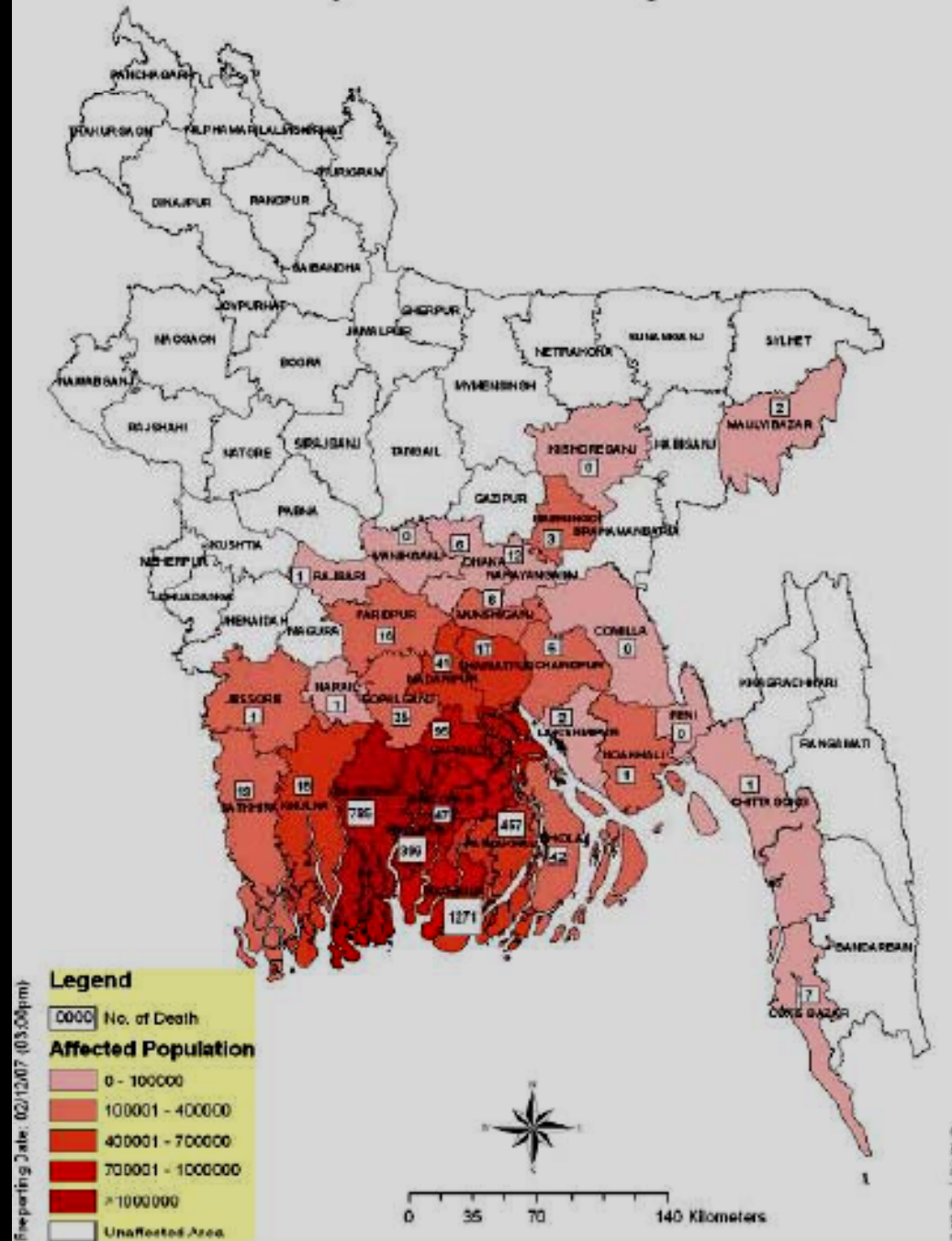


Infrastructure Damage

- a. Roads/tracks
 - 648 km (Completely)
 - 88,550 km (Partially)
- b. Educational Institutions
 - 1,355 (Completely)
 - 7,847 (Partially)
- c. Bridge/Culverts
 - 1654
- d. Embankment
 - 581 km

Total estimated loss - 2.31 Billion USD

Cyclone SIDR: Damage Information



Worst affected
areas
Cat-1

Patuakhali,
Pirojpur, Bagerhat,
Barguna,

Cat-2 Barisal,
Bhola, Shatkhira
and Jhalkhati
districts.

PRIORITY OF AFFECTED DISTRICTS

- BORGUNA
- PATUAKHALI
- BAGERHAT
- PIROZPUR
- JHALAKATHI
- BARISAL
- BHOLA

RESTORATION OF SERVICES



Road Comm

5 days

River Route

2 days

Electricity

**7 days except Morolganj,
Shoron khola, Patharghata**

Land phone

5 days

Cell Phone

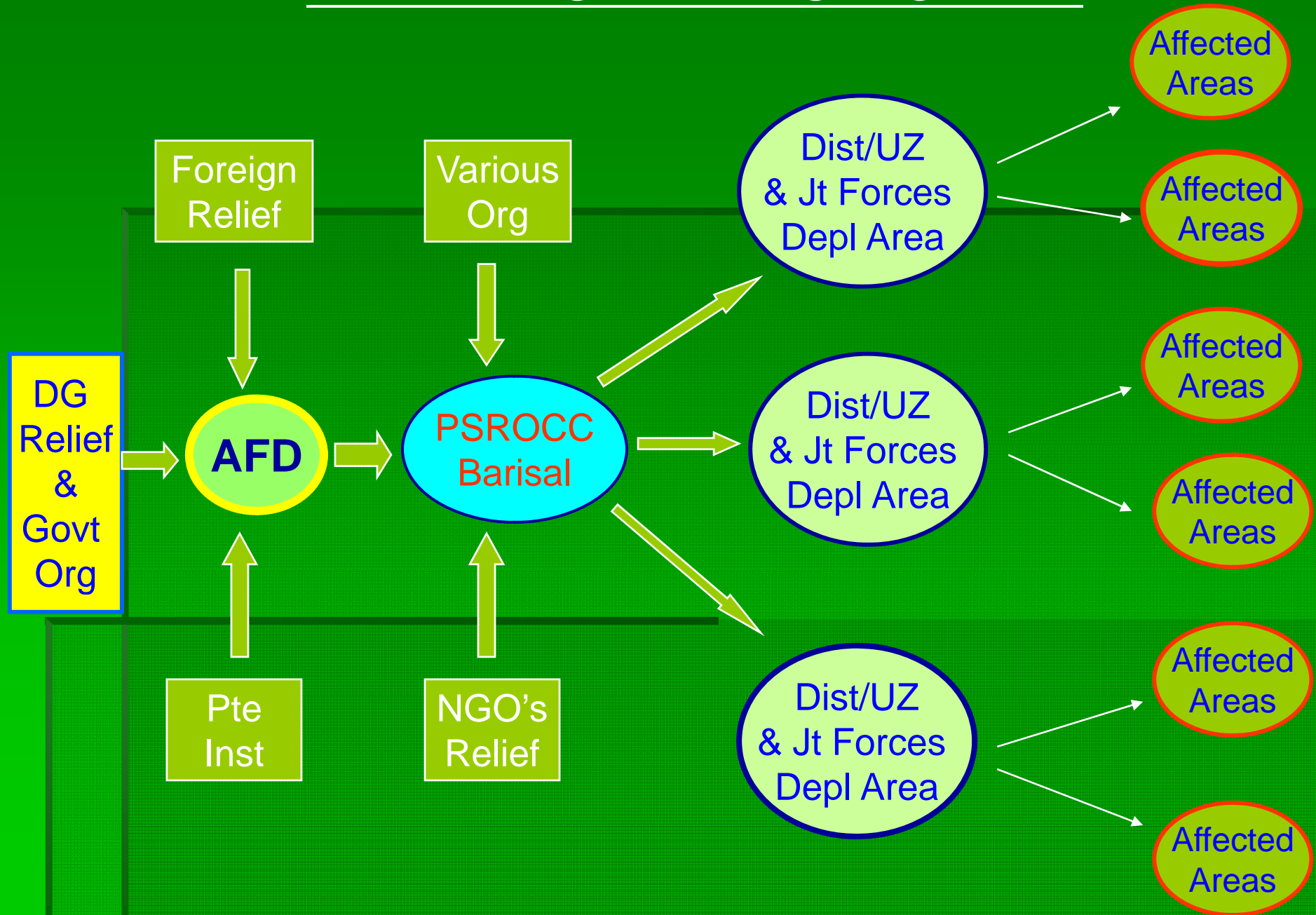
3 days



ROLE OF AFD

- Standing Order for Disaster Management (SOD)
- Delineating the Role and Responsibility of Concerned Agencies
- Coordinate the Employment of Armed Forces
- Coordinate the Relief Work of Three Services
- Identify the Worst Affected Areas and Setting Priority
- Monitoring Air Movement and Collecting Feedback.

RELIEF WORK – FLOW CHART



PROJECTED TASKS



PROJECTED TASKS



Immediate (Weeks)

- **Transportation of relief goods**
- **Damage Assessment and reconnaissance.**
- **Priority Needs.**

Food grain (Flour, rice, Edible oil etc), water purification plant.

- **SAR.**

PROJECTED TASKS



Short Term (Fortnight)

- Transportation of relief goods.
- SAR.
- Food and Water.
- Clothing.
- Damage Assessment.

PROJECTED TASKS



Mid Term (Months)

- Distribution of Relief.
- Transportation of relief and rehabilitation materials.
- Medical assistance to prevent epidemic and opening temporary shelters.
- Restoring adverse agriculture situation.
- Establishing road communication including construction of Bailey bridges.
- Hygiene and Sanitation Programme.

PROJECTED TASKS

Long Term (Quarters/ 4 Months)

- **Rehabilitate people into their original homes.**
- **Construction of multipurpose cyclone shelter.**
- **Rehabilitation for farmers and fishermen.**
- **Creating Employment Opportunities.**
- **Reconstr of Embankments**

OVERVIEW OF SIT



FOOD

- **DISTR BY ARMED FORCES FROM DHAKA**
 - **BY AIR ASSETS - 957.24 T**
 - **BY OTHER MEANS - 2598 T**

OVERVIEW OF SIT



FOOD

- **DISTR BY MOFDM**
- **THROUGH LOCAL ADMIN**
 - **RICE** - **10890 MT**
 - **GR CASH** - **273 M Tk**
 - **HOUSE BLDG** - **214 M Tk**

OVERVIEW OF SIT



WATER

- **DISTR BY ARMED FORCES**
 - **BY AIR ASSETS** - 25000 L
 - **BY OTHER MEANS** - 85000 L
- **DISTR BY US FORCES** - 58000 L

OVERVIEW OF SIT



WATER

- NO OF PHE TEAM WK – 207
- TUBEWELLS FIXED/ REPAIRED – 4000
- TOTAL NO OF WPP.
 - ARMED FORCES MEANS - 16
 - CIV ADMIN - 30
 - OTHER MEANS - 02

MED

Org	No of med teams	Depl area	Rmks
BD Army	13	KHULNA and BARISHAL	Incl 1X Mob Hosp
BN	08	BORGUNA, DUBLARCHAR	8 x Med Teams
KEARSARGE	02 (Mob/Hel)	As Nec	Op from KEARSARGE
US Med Team	01	PATUAKHALI SADAR	Wdr for Redepl at DHAKA on 03 Dec
Pak Army Med Team	01	BHANDARIA, PIROJPUR	
Civ Med Teams	424	KHULNA, BARISHAL, MADARIPUR and SHARIATPUR	Addl 313 Doctors Sent to Cyclone Hit Areas

LOAD CARR SO FAR

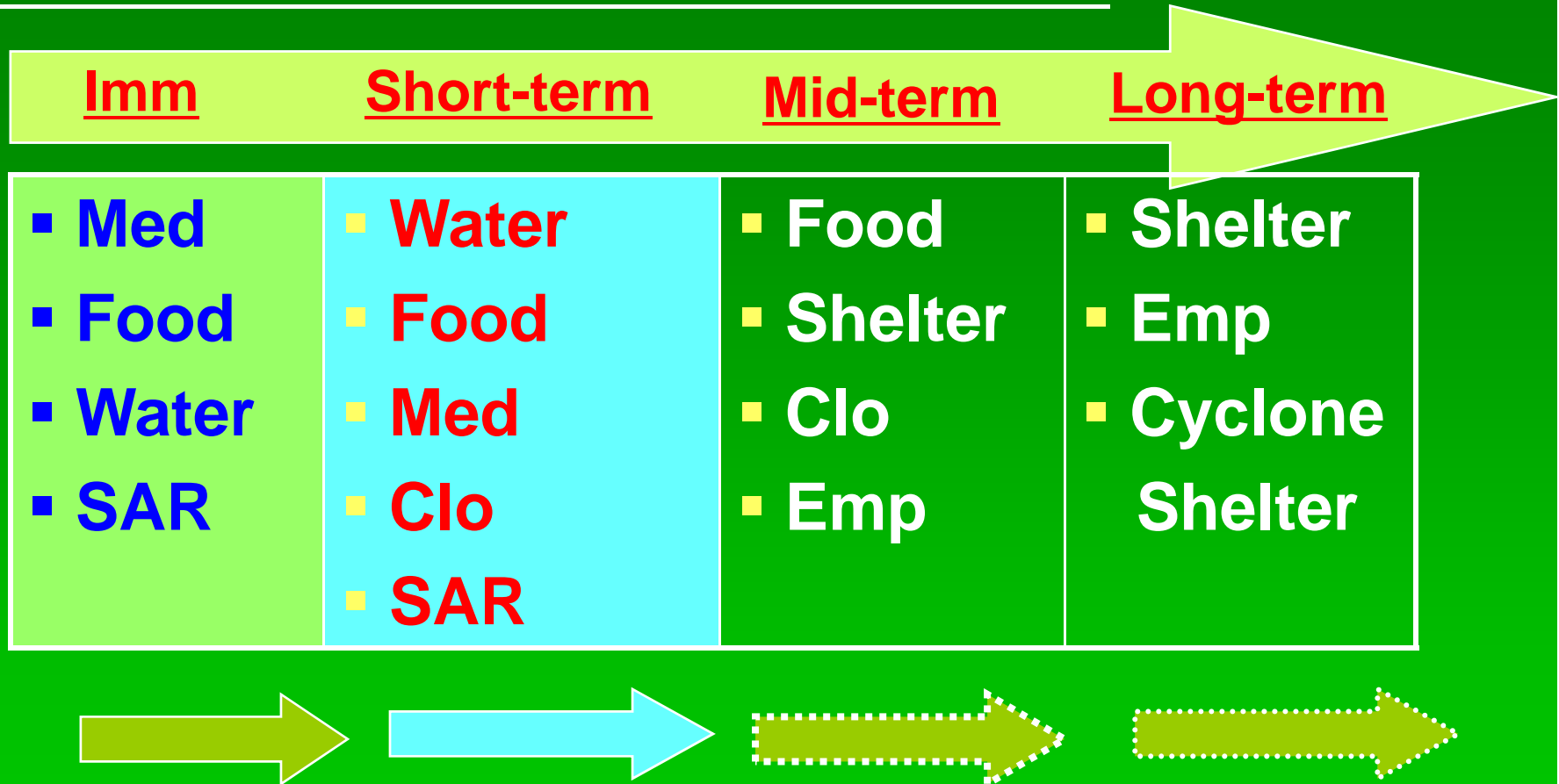
(FROM 15 NOV 07 TO 02 DEC 07)

BAF		US	
NO OF SORTIES	LOAD CARR	NO OF SORTIES	LOAD CARR
229	677.51 T	17	151.73 T

IMM NEED ASSESMENT- ONE MONTH (DEC-07)

	GR Rice (MT)	Dal (MT)	Tin (Bundle)
Proj Need	10,382	381	263,100
Govt Alloc	6000	0	13,000
Stock at DK	40	0	0
Addl Reqr	4342	381	250,100

NEED ASSESSMENT -FLOW





THANK YOU